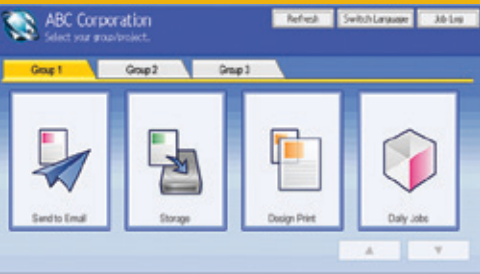


GlobalScan™ NX Serverless
Capture & Distribution Solution
Streamline Document Workflow

RICOH



simple



intuitive



GlobalScan NX
Serverless



versatile

Ricoh GlobalScan™ NX Serverless

Cost-Efficient Scanning

GlobalScan™ NX Serverless from RICOH® redefines fast, convenient scanning for organizations of any size. Designed for cost-conscious users, this versatile software requires no separate server, so it is easy to deploy and helps minimize expenses. However, it still allows users to send scanned documents to multiple destinations, quickly and easily, right from the touchscreen display of Ricoh multifunction products (MFPs).

Advanced Scanning Tools

GlobalScan NX Serverless lets users incorporate paper documents into a wide range of electronic workflows.

- Capture originals with a quick scan, then distribute them directly into network folders, e-mail and fax applications, FTP sites, WebDAV platforms and leading enterprise document management (EDM) systems.
- Upload scanned files, including PDF/A format, directly to a secure repository with the optional DocumentMall™ plug-in. This feature automatically generates a distribution folder and includes metadata in the transmission.
- Use pre-configured industry templates to improve scanning workflow in popular, industry-specific applications — such as accounts receivable, health care, human resources and many more — immediately.
- Create custom workflows that automate how your Ricoh MFPs capture and distribute scanned files, which saves time and reduces the risk of errors.
- Verify image integrity with Scan Image Preview. This feature provides thumbnails of every scanned page, so users can minimize the need for re-scans.
- Send incoming faxes to a special network folder for automated routing without a fax server.

Intuitive User Interface

GlobalScan NX Serverless features a convenient, customizable interface that users interact with directly at the MFP.

- Create “one-step” scanning functions using interactive icons. Each icon can be easily configured to deliver documents and metadata to multiple destinations.
- Reduce the need for user training with larger buttons, helpful text, images and icon-driven presets.

Simple Secure Management

GlobalScan NX Serverless makes it easy for administrators to control scanning activities and enhance security.

- Activate 128 bit encryption to protect documents during transmission. No files are ever stored on the MFP's hard disk drive, so no information is at risk after scanning.
- Allow administrators to manage GlobalScan NX Serverless on multiple MFPs using a browser-based tool installed on a PC workstation.
- Reflect changes made to your e-mail server at the MFP with live LDAP capabilities and Kerberos Active Directory authentication.
- Protect MFPs from unauthorized users by requiring network log-in authentication.



Accessible right from the MFP, the user-friendly interface simplifies document scanning and distribution.

Specifications

Computer for Installing Admin Tool

Main Unit:	PC/AT compatible
CPU:	Pentium Core 2 Duo, 2 GHz or faster recommended, 1 GB RAM
Hard Disk Space:	1 GB for software, 2 GB for data
Operating Systems:	Microsoft Windows XP Professional Service Pack 2 (32bit) Microsoft Windows Server 2003 Standard Service Pack 1 (32bit/64bit)/ Enterprise Service Pack 1 (32bit/64bit)/ R2 Standard and Enterprise (32bit/64bit) Microsoft Windows Server 2008 Standard Service Pack 1 and 2 (32bit/64bit)/ Enterprise Service Pack 1 and 2 (32bit/64bit)/ Standard without Hyper-V Service Pack 1 and 2 (32bit/64bit)/ Enterprise without Hyper-V Service Pack 1 and 2 (32bit/64bit)/ R2 Standard and Enterprise 64bit native support Microsoft Windows Vista Business Service Pack 1 and 2 (32bit)/Enterprise Service Pack 1 and 2 (32bit)/Ultimate Service Pack 1 and 2 (32bit) Microsoft Windows 7 Professional/Enterprise/Ultimate (32bit)
Web Server:	Built-in Web Server; Microsoft Internet Information Services 6.0, 7.0, 8.0
Network Protocol:	TCP/IP

Computer for Browsing Admin Tool

Web Browser:	Microsoft Internet Explorer 7 (Only for Windows XP)/8/9, Firefox 7.0.1 Adobe Flash Player 11.0.1.152 or later
---------------------	--

File Formats Supported

B/W:	TIFF (MMR, single/multipage), PDF (single/multipage)
Grayscale/FC:	JPEG, PDF (single/multipage)

External Devices

Keyboard support for entry of document metadata.

RICOH
www.ricoh-usa.com

Ricoh Americas Corporation, Five Dedrick Place, West Caldwell, NJ 07006
RICOH® and the Ricoh logo are registered trademarks of Ricoh Company, Ltd. All other trademarks are the property of their respective owners. The content of this document, and the appearance, features and specifications of products and services available from Ricoh are subject to change from time to time without notice. Products are shown with optional features. While care has been taken to ensure the accuracy of this information, Ricoh makes no representation or warranties about the accuracy, completeness or adequacy of the information contained herein, and shall not be liable for any errors or omissions in these materials. Actual results will vary depending upon use of the products and services, and the conditions and factors affecting performance. The only warranties for products and services available from Ricoh are as set forth in the express warranty statements accompanying them.



GlobalScan NX
Serverless