

Ricoh Aficio Color 5560V  
Color Digital Imaging System  
The New Benchmark for High-Speed  
Color Communications

**RICOH**



fast



simple



productive



# Ricoh Aficio Color 5560V

**High-speed color with quality and efficiency.** Whether upgrading from a fleet of desktop color printers or introducing color capabilities in-house, the RICOH® Aficio® Color 5560V is a total solution for producing and distributing every document in your office. It reduces the expense of managing multiple low-volume printers, copiers and scanners while eliminating the cost of color outsourcing. The powerful Ricoh Aficio Color 5560V is an asset you can depend on for the fast and cost-effective production of all your business color applications.



# Multifunction Flexible Manageable

## Color with Quality, Speed and the Ultimate Simplicity

The Ricoh Aficio Color 5560V is designed for productivity, usability and superior image quality, with an array of color calibration and registration technologies to ensure sharp, consistent results.

- Speeds of up to 55 ppm full color and 60 ppm black & white combine with true 600 dpi scanning and printing so that every page always looks its best.
- Automatic Color Selection (ACS) determines which pages to reproduce in color or black & white, even within mixed sets.
- The Color Usage Restriction function assures you're only paying for the color you use by controlling the color usage activity of others.
- Oil-less toner formula delivers a rich color gamut and hardcopies with just a touch of gloss.
- Replacing toner is as simple as dropping the toner bag into the respective hopper.
- User-adjustable paper drawers automatically detect the loaded paper size, making additional programming unnecessary.

## Multifunction Means More than Copying and Printing

If information sharing and archiving are as critical to your business as hardcopy document production, utilize the Ricoh Aficio Color 5560V's full-color scanning.

- TWAIN scanning lets you digitize hardcopy originals for incorporation into new documents.
- The 100-Sheet Automatic Reversing Document Feeder quickly captures one- or two-sided originals at speeds up to 60 ipm (images per minute) for monochrome documents and 45 ipm for color pages.
- The scanner detects the size of each original, while Automatic Paper Selection (APS) chooses the proper copy paper size automatically.
- Control the level of detail, file size and file format so users can open, view and/or print documents exactly as they were created.

## Diverse Document Management and Distribution Capabilities

The Ricoh Aficio Color 5560V comes complete with a full complement of standard utilities for storing, organizing, retrieving and distributing your documents and data.

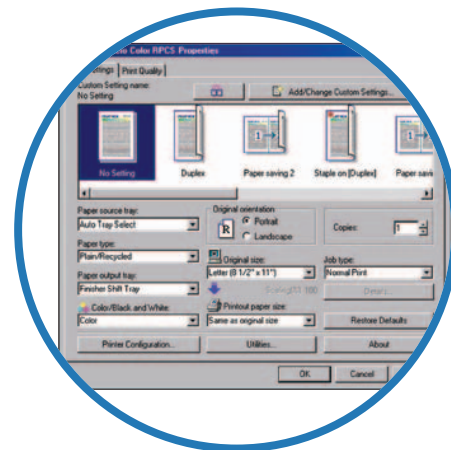
- Versatile color Scan-to functions allow for efficient document storage and distribution to hundreds of e-mail addresses or networked File/Folder/FTP destinations in a single operation.
- Document Server function scans, stores and organizes up to 3,000 documents with the power of 1,384MB RAM and a 4 x 80GB Hard Disk Drive array.
- DeskTopBinder combines and publishes files from various applications as a single, cohesive document.



The Ricoh Aficio Color 5560V control panel features an intuitive design with clearly labeled hard keys and easy-to-understand icons. This same ease of use is available through the Ricoh RPCS (Refined Print Command Stream) print driver.



Choose from several high-capacity Finishers with multi-position stapling and/or hole punching, and even produce saddle-stitched, folded booklets in-house.



Access and manage your document production system with just a few clicks of the mouse to optimize your printing productivity with Ricoh RPCS (Refined Print Command Stream).



# CopyPrintScanManage

## Streamlined Design and Enhanced Control Improve Productivity

**The easier office equipment is to use and control, the more productive your employees will be. That's why Ricoh has designed the Aficio Color 5560V to be easy to operate, easy to manage, and easy to get the desired results, every time.**

- Enormous 7,400-sheet maximum paper supply means less interruptions and less maintenance.
- Full-format capabilities let you output full-bleed spreads of facing pages on 12" x 18".
- Several high-capacity Finishers offer multi-position stapling and/or hole punching, and even let you produce duplexed saddle-stitched booklets.
- Tab Accessory produces color tabs to separate sections for that professionally published look in binders, handbooks and manuals.
- LDAP Authentication ensures only authorized users with active usernames and passwords can access the system, while advanced data encryption ensure security and integrity.
- HDD DataOverwriteSecurity System (DOSS) automatically overwrites information using methods that conform to National Security Agency (NSA) standards.
- Web Image Monitor tracks system use and status in real-time letting you check or change printer settings, view job histories and device status, monitor toner and paper levels, reset print jobs or reboot the printer—all without ever leaving your desk.
- Control panel features an intuitive design with clearly labeled hard keys and easy-to-understand icons.

## Versatile Networking Support for Any Environment

**The Ricoh Aficio Color 5560V is compatible with all of the most popular computing environments, making it a great solution for the wide range of jobs produced by general business users every day.**

- The 10/100BaseTX Ethernet interface allows every user to share the power of high-speed color printing, while the USB 2.0 port enables peer-to-peer device access and control.
- Optional IEEE 802.11b or Bluetooth wireless interface meets your special connectivity needs.
- Wireless connectivity simplifies printing for visitors and gives you the benefits of networked printing without a LAN connection.
- Auto Switching technology means a seamless adjustment to data streams generated by Windows®, Macintosh® or UNIX clients in mixed-network environments.
- Standard support for the Ricoh RPCS and PCL 5c/6 page description languages and drivers, with optional genuine Adobe® PostScript® 3™.



## Your Environmental Partner



**Ricoh continues its long-standing commitment to developing office solutions with environmentally friendly and superior energy- and supply-saving features, without compromising productivity, including:**

- Quick Start-Up (QSU) Technology
- Power-Saving Sleep Mode
- Duplex and Combine Copy Modes
- Toner Recycling
- Low Noise Levels
- Minimal Ozone Emissions
- Restriction of Hazardous Substances (RoHS) Compliant

# FastSimpleProductive

Standard 100-Sheet Automatic Reversing Document Feeder

Optional Cover Interposer

Optional 3,000-Sheet Finisher

Standard 100-Sheet Bypass Tray

Optional 4,000-Sheet Large Capacity Tray

Standard 2 x 1,100-Sheet Tandem Paper Tray

Standard 2 x 550-Sheet Universal Paper Trays



The Ricoh Aficio Color 5560V interface allows every user to share the power of high-speed color printing, while the USB 2.0 port enables peer-to-peer device access and control.



Desktop PC



Laptop PC



PDA utilizing Bluetooth technology

# Ricoh Aficio Color 5560V

## System Specifications

Aficio®

### General Specifications

<b>Printing Process</b>	4-drum Electrostatic Transfer System with Internal Transfer Belt and Dry Two-component Development
<b>Output Speed</b>	Black & White: 60 ppm Full-Color: 55 ppm
<b>Multiple Copies</b>	1 to 999
<b>Warm-up Time</b>	300 seconds
<b>First Copy Time</b>	Black & White: 6.5 seconds Full-Color: 7.5 seconds
<b>Copy Resolution</b>	600 x 600 dpi
<b>Original Type</b>	Books/Sheets/3D Objects
<b>Output Size</b>	5.5" x 8.5" to 11" x 17" Full bleed output on 12" x 18" 11.69" x 18"
<b>Maximum Image Area</b>	
<b>Standard Paper Capacity</b>	1,100 x 2 + 550 x 2 + 100 Bypass
<b>Optional Paper Supply</b>	4,000-Sheet LCT (max. capacity: 7,400 sheets)
<b>Paper Sizes/Weights</b>	Standard Tray 1: 8.5" x 11" / 14 – 34 lb. Bond (52.3 – 127.9 g/m <sup>2</sup> ) Standard Trays 2 & 3: Up to 12" x 18" / 14 – 34 lb. Bond (52.3 – 127.9 g/m <sup>2</sup> ) 100-Sheet Bypass: Up to 12" x 18" / 14 lb. Bond – 140 lb. Index (52.3 – 127.9 g/m <sup>2</sup> ) 4,000-Sheet LCT: 8.5" x 11" / 14 – 34 lb. Bond (52.3 – 127.9 g/m <sup>2</sup> )
<b>Paper Types</b>	Plain paper, Recycled paper, Laser qualified transparencies
<b>Duplexing</b>	Standard
<b>Output Tray Capacity</b>	500 sheets
<b>Zoom</b>	25% – 400% in 1% increments
<b>Reduction Ratios</b>	93%, 85%, 78%, 73%, 65%, 50%, 25%
<b>Enlargement Ratios</b>	121%, 129%, 155%, 200%, 400%
<b>Page Memory (LTR)</b>	Document Server stores up to 3,000 documents; Maximum pages per document: 2,000 pages
<b>Power Source</b>	120V/20A, 60Hz
<b>Maximum Power Consumption</b>	Less than 1,920W
<b>Dimensions (WxDxH)</b>	29.5" x 33.5" x 41.3" (750 x 850 x 1050 mm) excludes standard ARDF
<b>Weight</b>	656.9 lbs. (298 kg) includes standard ARDF

### Printer Controller Specifications (Standard)

<b>CPU</b>	Intel Celeron LV @ 733 MHz
<b>Memory</b>	1,384MB RAM Std./Max. (Shared) 4 x 80GB HDD = 320GB HDD (Shared)
<b>Page Description Languages</b>	RPCS, PCL 5c/PCL 6 Adobe®PostScript®3™/PDF Direct Print (optional)
<b>PCL Fonts</b>	PCL: 45 fonts
<b>PostScript Fonts</b>	136 Adobe PostScript Type 1 fonts (optional)
<b>Print Resolution</b>	600 x 600 dpi
<b>Standard Interfaces</b>	10BaseT/100BaseTX Ethernet, USB 2.0
<b>Optional Interfaces</b>	IEEE 1284/ECP Type A, IEEE 1394 Type B, IEEE 802.11b Wireless LAN Unit Type H, Bluetooth Type 3245 (Choose one)
<b>Network Protocol</b>	TCP/IP, IPX/SPX; SMB (NetBIOS over TCP/IP) Apple Talk (Auto Switching)
<b>Drivers</b>	RPCS, PCL 5c/6 and PS: Windows 95/98SE/NT4.0/2000/Me/XP/Server 2003 Netware 3.12, 3.2, 4.1, 4.11, 5.0, 5.1, 6 PS: Mac OS 8.6 – 9.2x, OS X 10.1 or later UNIX; Sun Solaris, HP-UX, SCO OpenServer, RedHat Linux, IBM AIX SmartDeviceMonitor for Administrator and Client, Web SmartDeviceMonitor, Web Image Monitor, DeskTopBinder Lite
<b>Utilities</b>	
<b>Security Features</b>	<b>DataOverwriteSecurity System (DOSS) Type C (Optional):</b> Security feature that overwrites latent data on the system's hard drive after copy, scan and print jobs. <b>Other Security Features:</b> Locked (Secure) Print, SSL print, SNMP v3 support, Windows Authentication

### Scanner Specifications

<b>Scanning Resolution</b>	Full-color mode: From 100 – 600 dpi (1,200 dpi TWAIN) Monochrome mode: From 100 – 600 dpi Default Setting: 200 dpi
<b>Scanning Speed</b>	Black & White: 60 spm Full-Color: 45 spm
<b>Scan Area</b>	Maximum: 11.69" x 17"
<b>Original Size</b>	5.5" x 8.5" to 11" x 17"
<b>Protocol Supported</b>	Network: TCP/IP; Scan-to-Email: SMTP; Scan-to-Folder: SMP, FTP
<b>File Format</b>	Black & White: TIFF (Single/Multi Page), PDF (Single/Multi Page) Grayscale: JPEG (Single Page) Full-Color: PDF (Single/Multi Page)
<b>Scan-to Modes Supported</b>	Scan-to-Email (with LDAP support), Scan-to-Folder FTP/SMB, Network TWAIN scanning

### Hardware Accessories

#### Automatic Reversing Document Feeder (Standard)

<b>Original Size</b>	5.5" x 8.5" to 11" x 17"
<b>Original Weight</b>	Simplex: 11 lb. – 34 lb. Bond (40 – 128 g/m <sup>2</sup> ) Duplex: 14 lb. – 34 lb. Bond (52 – 128 g/m <sup>2</sup> ) 100 Sheets

#### Original Stack Capacity

#### Large Capacity Tray (Optional)\*

<b>Paper Capacity</b>	4,000 sheets (Letter) 2,500 sheets (Legal)**
<b>Paper Sizes</b>	8.5" x 11", 8.5" x 14" **
<b>Paper Weights</b>	14 lb. – 34 lb. Bond (52 – 128 g/m <sup>2</sup> )

\*Requires LCT Adapter

\*\*Requires Legal size conversion kit

#### 9-Bin Mailbox (Optional)\*

<b>Number of Bins</b>	9
<b>Stack Capacity per Bin</b>	100 sheets
<b>Acceptable Paper Size</b>	5.5" x 8.5" to 11" x 17"
<b>Acceptable Paper Weight</b>	14 lb. – 34 lb. Bond (52 – 128 g/m <sup>2</sup> )

\*Cannot be used with SR842 Finisher or Interposer.

#### SR842 3,000-Sheet Finisher w/100-Sheet Stapling (Optional)\*

<b>Number of Trays</b>	2
<b>Paper Sizes</b>	5.5" x 8.5" to 11" x 17"
<b>Acceptable Paper Weights</b>	14 lb. Bond – 140 lb. Index (52 – 128 g/m <sup>2</sup> )
<b>Stacking Capacity</b>	Proof Tray: 500 sheets (8.5" x 11" or smaller) 250 sheets (8.5" x 14" or larger) Shift Tray: 3,000 sheets (8.5" x 11" or smaller) 1,500 sheets (8.5" x 14" or larger)
<b>Staple Capacity</b>	Up to 100 pages per set (8.5" x 11" or smaller) Up to 50 sheets per set (8.5" x 14" or larger) 8.5" x 11" to 11" x 17" 17 lb. – 20 lb. Bond (64 – 84 g/m <sup>2</sup> )

#### Staple Capacity

<b>Staple Paper Size</b>	8.5" x 11" to 11" x 17"
<b>Staple Paper Weight</b>	17 lb. – 20 lb. Bond (64 – 84 g/m <sup>2</sup> )
<b>Staple Positions</b>	Top, Bottom, 2 Staple, Top Slant
<b>Finisher Accessories</b>	Hole Punch Unit, Jogger Option

\*Requires Finisher Adapter

#### SR970 3,000-Sheet Finisher w/50-Sheet Stapling (Optional)

<b>Number of Trays</b>	2
<b>Acceptable Paper Size</b>	5.5" x 8.5" to 12" x 18"
<b>Acceptable Paper Weight</b>	14 lb. Bond – 140 lb. Index (52 – 256 g/m <sup>2</sup> )
<b>Stacking Capacity</b>	Proof Tray: 250 sheets (8.5" x 11" or smaller) 50 sheets (8.5" x 14" or larger) Shift Tray: 3,000 sheets (8.5" x 11" or smaller) 1,500 sheets (8.5" x 14" or larger)

<b>Staple Capacity</b>	Up to 50 pages per set (8.5" x 11" or smaller) Up to 30 sheets per set (8.5" x 14" or larger)
<b>Staple Paper Size</b>	8.5" x 11" to 11" x 17"
<b>Staple Paper Weight</b>	17 lb. – 28 lb. Bond (64 – 90 g/m <sup>2</sup> )
<b>Staple Positions</b>	Top, Bottom, 2 Staple, Top Slant
<b>Finisher Accessories</b>	Hole Punch Unit, Jogger Option

#### SR4000 2,000-Sheet Finisher w/Saddle Stitch Stapling (Optional)

<b>Number of Trays</b>	2
<b>Paper Sizes</b>	5.5" x 8.5" to 12" x 18"
<b>Acceptable Paper Weights</b>	14 lb. Bond – 140 lb. Index (52 – 256 g/m <sup>2</sup> )
<b>Stacking Capacity</b>	Proof Tray: 250 sheets (8.5" x 11" or smaller) 50 sheets (8.5" x 14" or larger) Shift Tray: 2,000 sheets (8.5" x 11" or smaller) 1,000 sheets (8.5" x 14" or larger)
<b>Staple Capacity</b>	Up to 50 pages per set (8.5" x 11" or smaller) Up to 30 sheets per set (8.5" x 14" or larger) Saddle Stitch: Up to 15 sheets

#### Staple Capacity

<b>Staple Paper Size</b>	8.5" x 11" to 12" x 18"
<b>Staple Paper Weight</b>	17 lb. – 28 lb. Bond (64 – 90 g/m <sup>2</sup> )
<b>Staple Positions</b>	Top, Bottom, 2 Staples, Top Slant, Saddle Stitch
<b>Saddle Stitch Paper Size</b>	8.5" x 11", 8.5" x 14", 11" x 17", 12" x 18" SEF
<b>Finisher Accessories</b>	Hole Punch Unit, Jogger Option

#### Cover Interposer Tray (Optional)\*

<b>Stack Capacity</b>	200 sheets
<b>Paper Sizes</b>	5.5" x 8.5" to 11" x 17"
<b>Acceptable Paper Weight</b>	17 lb. Bond – 110 lb. Index (64 – 216 g/m <sup>2</sup> )

\*Cannot be used with SR842 or 9-bin mailbox.

#### GBC StreamPunch III (Optional)\*

<b>Paper Size</b>	8.5" x 11" LFF
<b>Paper Weight</b>	20 lb. Bond – 110 lb. Index (216 g/m <sup>2</sup> )
<b>Die Sets</b>	CombBind®, Twin Loop wire (2:1 or 3:1), ColorCoil®, VeloBind®, Three-Ring, ProClick®

\*Requires SR842 Finisher.

#### BK5010 Production Booklet Maker (Optional)\*

<b>Paper Size</b>	8.5" x 11" – 11" x 17"
<b>Paper Weight</b>	16 lb. Bond – 110 lb. Index (216 g/m <sup>2</sup> )

\*Requires SR842 Finisher.

### Other Optional Accessories

<b>Copy Tray*</b>	
<b>Tab Sheet Unit</b>	
<b>11" x 17" Tandem Tray Converter</b>	
<b>Legal Tray for LCT</b>	
<b>Adobe PostScript 3 Unit Type 3260</b>	
<b>Copy Connector Type 3260</b>	
<b>File Format Converter Type B</b>	

\*If one of the finishers is not selected, the Copy Tray is required.

### Supplies

<b>Black Toner Cartridge</b>	36K output/cartridge (LTR 5% coverage)
<b>Cyan Toner Cartridge</b>	18K output/cartridge (LTR 5% coverage)
<b>Magenta Toner Cartridge</b>	18K output/cartridge (LTR 5% coverage)
<b>Yellow Toner Cartridge</b>	18K output/cartridge (LTR 5% coverage)
<b>Staple for 100-Sheet Stapler</b>	5,000 per cartridge
<b>Staple for 50-Sheet Stapler</b>	5,000 per cartridge
<b>Staple for Saddle Stitch Stapler</b>	2,000 per cartridge

**RICOH**

www.ricoh-usa.com

Ricoh Americas Corporation, Five Dedrick Place, West Caldwell, NJ 07006  
Ricoh® and the Ricoh Logo are registered trademarks of Ricoh Company, Ltd. Windows® and Windows® 95/98/Me/NT4.0/2000/XP/Vista are registered trademarks of Microsoft Corporation. Macintosh®, Mac® OS and AppleTalk® are registered trademarks of Apple Computer, Inc. Adobe® and PostScript® are registered trademarks of Adobe Systems, Inc. PCL® is a registered trademark of Hewlett-Packard Company. RPCS® is a trademark of Ricoh Company, Ltd. All other trademarks are the property of their respective owners. Print speed may be affected by network, application or PC performance. Specifications and external appearances are subject to change without notice. Products are shown with optional features.

Printed in U.S.A. on recycled paper because Ricoh cares.



R2714