

Ricoh Aficio MP W5100en/
MP W7140en
Wide Format
Built for Productivity in
High-Volume Environments

RICOH



productive



value



reliable

Ricoh Aficio MP W5100en/MP W7140en

High productivity. Color scanning. Fast output. It's all built in to the RICOH® Aficio® MP W5100en and MP W7140en Wide Format Digital Imaging Systems.

The Ricoh Aficio MP W5100en and MP W7140en are designed for fast output as you capture, share and save all of your customer's documents. These units are perfect for converting hard copy documents into an electronic workflow with the built-in color scanner and a host of Scan-to functionality. The Ricoh Aficio MP W5100en and MP W7140en Wide Format Digital Imaging Systems are truly high productivity tools that can help you work smarter, collaborate easier and share faster within your fast-paced production environment.



FastProductiveDurableVersatile

Built-In Productivity

Add up the fast output speed, user simplicity and smart engineering of the Ricoh Aficio MP W5100en and MP W7140en Wide Format Digital Imaging Systems, and you get systems that will be the workhorse in your reprographic area for years to come.

- Jump-start your workflow productivity with output speeds up to 10 or 14 documents per minute.
- Share the productivity from day one, thanks to the redesigned, super-wide color LCD operation panel.
- Reduce paper and toner usage by previewing document thumbnails before printing or scanning.
- Simplify and enlarge displays with the touch of a button for easier walkup use.
- Change paper and toner in a snap—clear jams, too—through the easy-to-use front-loading drawers and clamshell engineering.

Streamline Your Workflow

Whether you use the Ricoh Aficio MP W5100en and MP W7140en Wide Format Digital Imaging Systems with a dedicated professional operator, have walkup users or work from a remote PC, you can configure exactly the system you need to optimize your unique workflow.

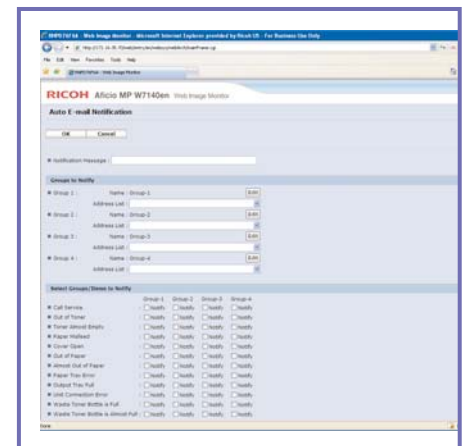
- Eliminate tedious document updating by capturing as-builts, handwritten, on-site changes and color markups, and then integrating them with satellite imagery, photographs and maps to create complete bid sets.
- Create and distribute documents with a comprehensive selection of Scan-to options.
- Scan project documents directly into an electronic plan room for easy viewing by other architects, engineers or contractors.
- Simplify document access by temporarily storing documents on the 320 GB (160 x 2) "Document Server" and view them on the control panel or your PC for reprinting, as needed.
- Take your documents anywhere with the Scan-to-USB/SD card option and share them on the fly.

Manage Your System Remotely

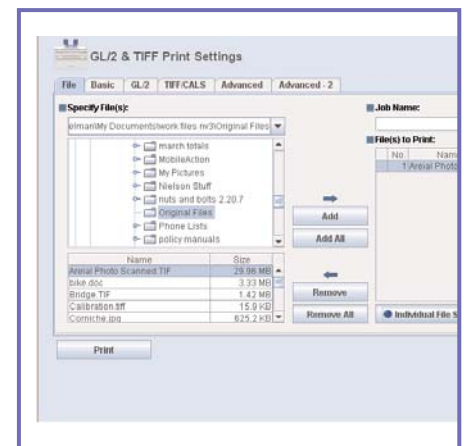
- Use WebImageMonitor to view documents in the Document Server, monitor supply levels, check job details, assign e-mail notification to key team members, remotely cancel jobs and reboot the system from anywhere on the network.
- Use the Document Server to assemble job sets—remotely or at the system itself—from prints, copies and scans.
- Manage advanced security features, including Windows Authentication and PDF Encryption, to keep your documents safe at every stage of printing and distribution.



8.5-inch wide, high-definition LCD control panel makes wide format printing and scanning as easy as a standard copier.



WebImageMonitor allows you to view documents in the Document Server, monitor supply levels, check job details, assign e-mail notification to key team members, remotely cancel jobs, and much more—right from your desktop.



Manage print jobs and build sets with multiple file formats (including TIFF, CALS, PDF) remotely via web browser, without loading a print driver.

PrintCopyScanFinish

Simple, Versatile, Secure Print Controller

The single footprint, embedded printer option easily handles the most common file formats and maximizes floor space.

Built-In Printing

- Driver support for Windows—PostScript, HDI and a Web Print Tool to build job sets from HP-GL, TIFF, PDF and CALS file formats.
- The built-in security features included with the RPCS drivers provide piece of mind—Lock print, Hold print and Stored print.

Built-In Scanning

Changes and additions or “redlines” are a fact of life for architects, engineers and contractors. The Ricoh Aficio MP W5100en and MP W7140en Wide Format Digital Imaging Systems let you capture and distribute these changes—in color—through a built-in color scanner and the standard Scan-to functions.

Built-In Color Scanner

- Minimize system footprint with the embedded color scanner.
- Scan documents of extensive sizes and types, including architectural drawings, sepias, blueprints, detailed maps, folded or wrinkled documents, oversized drawings, photos or posters with unrivaled speed and image quality.
- Scan your documents directly to e-mail, SMB, Folder, FTP, URL, NCP, a USB/SD card and Document Server.

Built to Last

The Ricoh Aficio MP W5100en and MP W7140en Wide Format Digital Imaging Systems are tough and durable Ricoh products, designed to be a long-term investment for your organization—even in the most demanding environments.

- Count on the Ricoh Aficio MP W5100en and MP W7140en's durable materials and reliable engine design to handle monthly volumes comparable to much higher priced products.
- Maximize your Total Cost of Ownership (TCO) by investing in a system with an exceptionally long life expectancy.

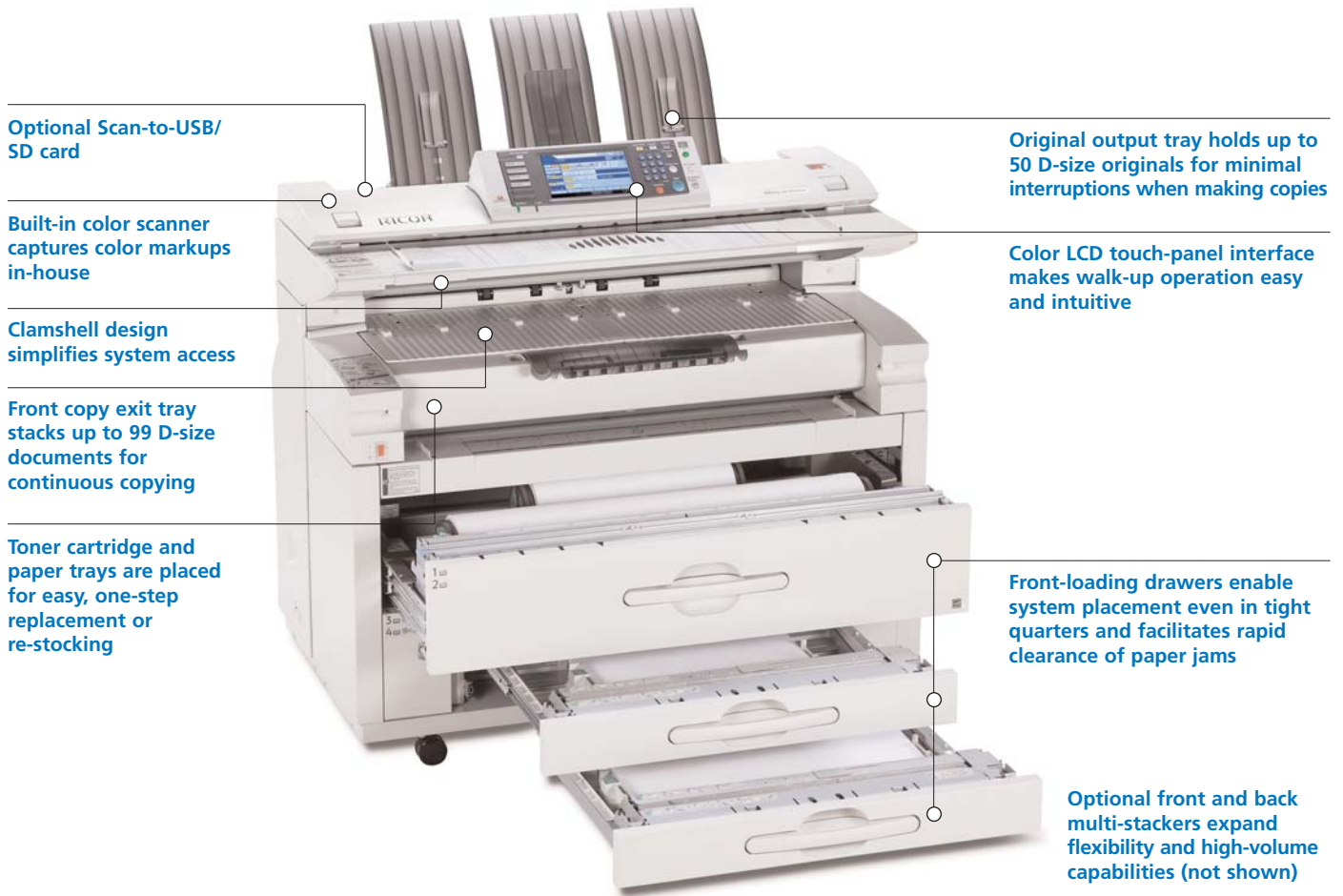


The Total Green Office Solution



Ricoh continues its long-standing commitment to developing office solutions with environmentally friendly and superior energy- and supply-saving features, without compromising productivity.

Powerful Productivity in a Compact Unit



Embedded Controller

Client PC Drivers (Windows OS)

HDI (print directly from AutoCAD)
RPCS (Windows based)
Postscript (PDF and PostScript files)
Web Print Tool (CALs, HP-GL 1/2, PDFs, TIFFs) (Browser based)

Client PC Drivers (Mac OS)

HDI (print directly from AutoCAD)
RPCS (Mac based)
Postscript (PDF and PostScript files)
Web Print Tool (CALs, HP-GL 1/2, TIFFs, PDFs) (Browser based)



MP W5100en/MP W7140en

Ricoh Aficio MP W5100en/MP W7140en

Specifications

Aficio®

Specifications

Configuration	Console
Copy/Printing Process	Electro-photographic printing
Paper Source	2 roll paper feeder (standard) 2 roll paper feeder (optional)* 2 drawer paper cassette trays (optional)*
	*Cannot be installed simultaneously
Warm-Up Time	Less than 120 Seconds
First Copy	10 seconds (D-size)
Copying Speed	MP W7140en: 14 ppm (D-size); MP W5100en: 10 ppm (D-size)
Resolution	600 dpi x 600 dpi
Grayscale Scanning	256 levels
Grayscale Printing	2 levels
Reduction/	18 presets; 25% to 400% by
Enlargement	0.1% increments
Multiple Copies	1 to 99 (ten key input)
Cutting Method	Synchronized, preset cut, variable cut
Memory Capacity	1,024 MB (Copy/Printer); 2,048 MB (required with scanner option)
Standard Hard Drive	320 GB (160 x 2)
Original/Copy Size	Maximum: MP W7140en: 36" x 1180" (98.4 ft.); MP W5100en: 36" x 590" (49.2'); Minimum: 8.5" x 8.5"; 36" x 78" bypass
Original Exits	Rear (upper), Original rear exit (straight through), Original upper exit
Copy Exits	Front: 99 Sheets (Plain Paper D-size LEF) Back: 10 Sheets (Plain Paper E-size LEF)
Power Source	MP W7140en: 208 – 240V 15A 60Hz (NEMA 6 – 20R) MP W5100en: 208 – 240V 10.5A 60Hz (NEMA 6 – 20R)
Max Power Consumption	3kW per hour
Dimensions (WxDxH)	49.2" x 29.7" x 47.2"
Weight	507 lbs.

Copier Features

- 2 Drawer Cut Sheet Paper Tray (option)
- Auto Paper Selection (APS)
- Auto Reduce/Enlargement, User Auto Reduce/Enlargement, Preset Reduce/Enlargement, Zoom, Size Magnification, Directional Magnification
- Directional Size Magnification (percentage and mm/inch), Fine Magnification
- Electronic Sort
- Image Overlay, Format Overlay, Negative/Positive, Mirroring, Double Copy, Repeat Copy, Combine Images
- Job Interrupt
- Job Program (up to 10 jobs)
- Manage System and Security Settings, Document Server, Printer and Scanner Features
- Margin Adjustment
- Preset Stamps, User Preset Stamps, Date Stamp, Page Stamp
- Standard 320 GB Hard Disk Drive: Store Up to 3,000 Documents
- User Tools, Manage System and Security Settings, Document Server, Printer and Scanner Features

Copier Options

Paper Cassette Tray	2 drawer paper cassette; adjustable up to 18" x 24". Holds up to 250 sheets x 2 (17 lbs. – 20 lbs.)
Roll Feeder	2 roll feeder option; holds an additional 2 rolls (4 rolls total)
Roll Holders	2 holders, max roll diameter 3" core

Printer Option Type W7140 (Option)

Controller Board	Embedded
Print Speed	MP W7140en: 14 ppm D-size LEF, 7 ppm E-size SEF; MP W5100en: 10 ppm D-size LEF, 5 ppm E-size SEF
Print Resolution	Up to 600 dpi
HDD	320 GB (160 x 2) (Shared with other applications such as Copy/Scanner)
Supported File Formats	HP-GL, HP-GL2, HP-RTL, TIFF, PostScript/PDF, CALS, MS Office File Formats, JPEGs HDI Driver: DWG, DWF

Scanner Option Type W7140 (Option)

Controller Board	Embedded
Scan Speed	MP W7140en and MP W5100en: 1.75 ips – 13 ips @ 600 dpi 150 dpi to 600 dpi;
Scan Resolution	Twain: up to 1200 dpi
Scanner Features	Scan-to-Email, Scan-to-Folder, Network TWAIN, Scan-to-NCP, Scan-to-FTP, Scan-to-SMB, Scan-to-Document Server, Scan-to-USB/SD
Edit	Erase Border, Positive/Negative, Mirror Image
Preview	Full View: 18" x 24"; Section Preview: 36" x 48"
File Formats	Multi page TIFF, Single page TIFF, Multi page PDF, Single page PDF, Single page JPEG

Scanner Features

- Authentication Modes
- Contrast Setting Integrated
- Continuous Input
- Invert
- Mirror/Positive/Negative
- Multiple Scan Settings
- Preview While Scanning
- Reading Area Setting
- RGB (24 bit), Grey, B&W
- Rotation
- Scan-to-Archive
- Scan-to-Email
- Scan-to-Folder
- Scan-to-FTP
- Scan-to-NCP
- Scan-to-SMB
- Scan-to-USB/SD

RICOH

www.ricoh-usa.com

Ricoh Americas Corporation, Five Dedrick Place, West Caldwell, NJ 07006

Ricoh® and the Ricoh Logo are registered trademarks of Ricoh Company, Ltd. All other trademarks are the property of their respective owners. The content of this document, and the appearance, features and specifications of Ricoh products and services are subject to change from time to time without notice. Products are shown with optional features. While care has been taken to ensure the accuracy of this information, Ricoh makes no representation or warranties about the accuracy, completeness or adequacy of the information contained herein, and shall not be liable for any errors or omissions in these materials. Actual results will vary depending upon use of the products and services, and the conditions and factors affecting performance. The only warranties for Ricoh products and services are as set forth in the express warranty statements accompanying them.

