

Device Manager NX Pro

Device Manager NX Enterprise

Ricoh @Remote Connector NX

Printer Driver Packager NX

Workflow Solution

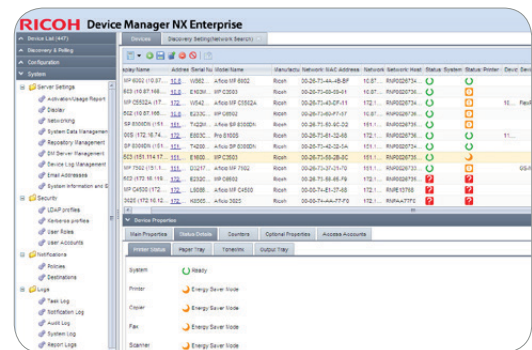


More control to manage more devices

How much money and resources does your organization invest in output devices? Is it worth it? Find out for yourself. Use Device Manager NX Pro, Device Manager NX Enterprise, Ricoh @Remote Connector NX and Printer Driver Packager NX software from RICOH® to learn more about your fleet, so you can allocate resources more strategically. Track every device, analyze detailed reports and configure Ricoh devices at any time from wherever you are. Or, have our Ricoh Managed Document Services teams do it for you. Either way, you'll be able to access information quickly and customize hundreds or even thousands of Ricoh devices simultaneously to simplify day-to-day tasks for specific workgroups and users — as well as for yourself.

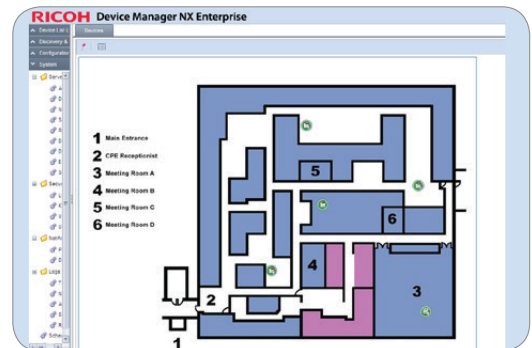
Control every device in every location

Output devices are spread all over your organization. That doesn't mean you have to spread yourself thin managing them. Work where it's most convenient. Run a detailed report from your desk to measure printer performance 2,000 miles away. Set global rules to encourage specific user behavior at several sites simultaneously. Receive automated status updates and service alerts on your phone and respond immediately when maintenance is needed. With the intuitive Web-based dashboard interface, you can map out your network, specify where you want to search, access devices and set administrative controls all from a central location without needing to coordinate local technical support or travel to each location to gather fleet data.



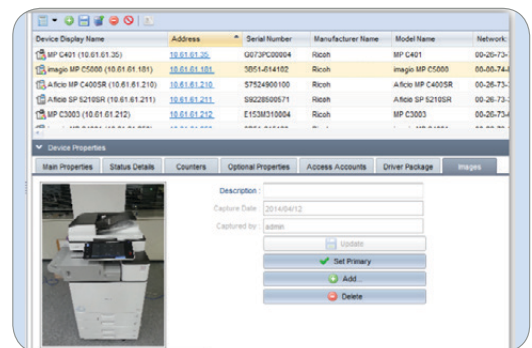
Gather critical data centrally

You can dedicate extensive IT resources to manage your expansive, varied fleet. Or, you can use Ricoh fleet management software and take advantage of our experience in helping large organizations manage documents and devices economically. Use our solutions to collect critical information from any print device from almost any manufacturer. Simply plot your entire fleet and click on the networked device or group of devices you want to manage. You can even obtain information from most USB-connected devices, including those hard-to-monitor personal desktop printers, to check usage without ever leaving your desk.



Use real-time data for faster, more strategic decisions


What good is information if you can't access it — or, if you don't know what to do with it? Use an intuitive dashboard to check the current status of any device in moments and receive real-time updates and reports. These detailed analysis and usage reports provide the data you need to make more astute decisions. You can even track your Ricoh device's energy performance metrics to measure how your organization — from individuals to workgroups to entire offices — are meeting environmentally initiatives. If you need to make changes, for example, force duplex printing, Printer Driver Packager NX lets you configure Ricoh print drivers with user restrictions and pre-determined settings to curb excessive use and operating costs.



Access critical fleet data to reduce costs


Tailor the management of networked and local devices

You're in control of your fleet. Whether it's tens, hundreds or thousands of devices at a single site, or tens of thousands of devices spanning many locations, Ricoh offers powerful software to simplify even the most complex fleet management tasks. Choose Device Manager NX Pro if you're managing up to 5,000 devices, and Device Manager NX Enterprise for unlimited device support. Gather critical usage data via automated meter readings and maintenance alerts. Use the data to adjust settings on individual devices. Or, you can group devices for faster batch updates. In fact, you can remotely retrieve key settings from one Ricoh device and create a task to configure, or clone, multiple units of the same Ricoh model in your fleet, so every user has the same icons and capabilities they're familiar with — wherever they are.



**RICOH
DEVICE MANAGER
NX PRO**

Supports up to
5,000 Devices



**RICOH
DEVICE MANAGER
NX ENTERPRISE**

Unlimited Device
Support

Find out where you can save

The more you know, the more you save. With Ricoh @Remote Connector NX, you can gather actual usage data that's easily accessible via the secure Web-based fleet reporting dashboard. You can analyze which devices are underutilized or overworked, and make accommodations to relocate them to balance the fleet. Have you noticed rising energy costs at a branch location? Simply set the devices to shut down automatically overnight. Excessive color printing costs at another location? Implement user authentication controls to encourage more responsible, more affordable black-and-white printing. In only seconds, you can assess every detail, including page counts, duplex printing and more, to gain more insight about every device in your fleet.

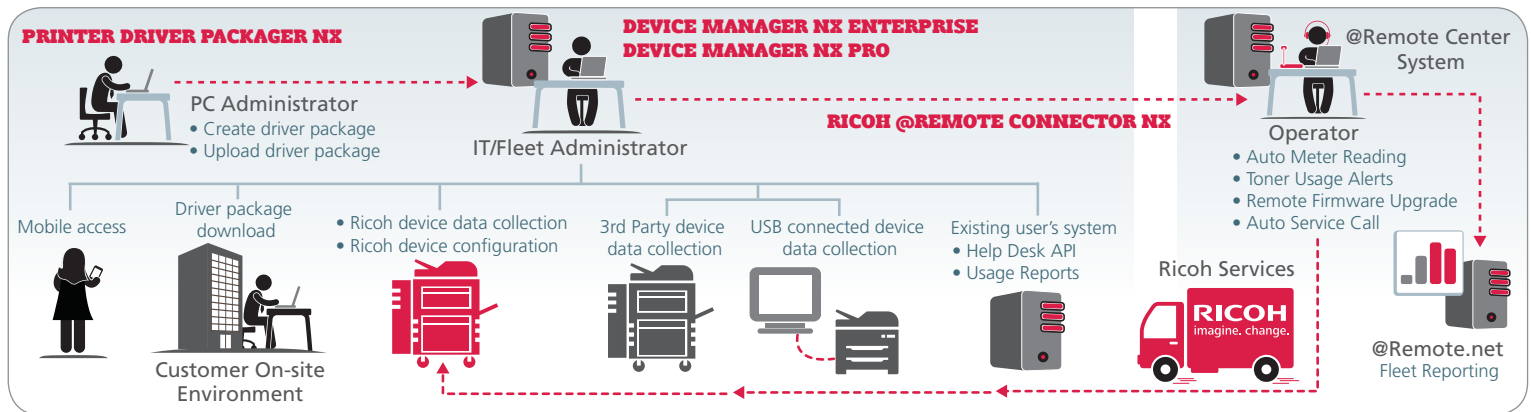


Get up and running quickly

The moment a printer is installed, there's somebody wanting to use it. Use the Ricoh Printer Driver Packager NX to configure print drivers quickly and economically, so your team can begin printing immediately. Modify values, lock settings for individuals or workgroups, add convenient icons and prompts and set user codes in batch configurations. You can even compile multiple Ricoh driver packages into one installer package so end users can install them quickly in a single step. The software eliminates expensive print servers and simplifies print driver installations for organizations of every size.



Device Manager NX Pro, Device Manager NX Enterprise, Ricoh @Remote Connector NX, Printer Driver Packager NX



Map, monitor and configure a large fleet of devices from one centralized location for faster, more affordable administrative control.

DEVICE MANAGER NX PRO AND DEVICE MANAGER NX ENTERPRISE

Item	Specification	Device Manager NX Professional	Device Manager NX Enterprise
Server Spec	Minimum: CPU: Intel Core i5/i7 or better; or Intel Xeon X3400 series or better; or AMD Athlon X2/Phenom or better or AMD Opteron 1300/2300/8300 series or better Available Memory: 2 GB, Available HDD space: 2 GB (excluding database) Recommended: CPU: Intel Xeon X3500 series or better; or AMD Opteron 4100/6100 series or better Available Memory: 4 GB, Available HDD space: 3 GB (excluding database)	✓	Core & DM Server(s)
OS	Server environment: Windows Server 2008 Std/Ent SP1+ (32/64-bit), Windows Server 2008 R2 Std/Ent SP1+ (64-bit), Windows Server 2012 Standard (64-bit), Windows Server 2012 R2 Std/Datacenter (64-bit) Client environment: Any environment with supported web browser	✓	✓
Web Server	Internal web server (Jetty) IIS 7, 7.5, 8 DMNX uses a Jetty Web Server by default. However, you can configure an IIS server to redirect IIS requests to Jetty.	✓	✓
Database	Standard: Microsoft® SQL Server 2012 Express Edition (Device Manager NX Pro only) Optional external databases: Microsoft® SQL Server 2008 (Workgroup, Standard, Enterprise), Oracle 11g R2 at 11.2.0.4 or greater (Standard, Standard One, Enterprise), Oracle 12c (Standard, Standard One, Enterprise)	Standard Optional	Unsupported Required
Virtual Environment	VMWare ESX 4, VMWare ESXi 4.1, 5, Windows Server 2008 Hyper-V 2.0, Windows Server 2012/R2 Hyper-V	✓	✓
Browser	Mozilla Firefox 17 ESR, Microsoft® Internet Explorer 8, 9, and 10, Apple Safari 6.0. Note: Touch screen only browsers are not recommended.	✓	✓

DEVICE MANAGER NX USB AGENT – CLIENT PC (USB CONNECTED DEVICES)

PC Spec	CPU: Intel Pentium4 or better (500MHz or higher) Available Memory: 512 MB, Available HDD space: 200 MB (For installation 100 MB)
OS	Windows Vista Premium, Business, Enterprise, Ultimate (32/64-bit), Windows 7 Home Premium, Professional, Enterprise, Ultimate (32/64-bit), Windows 8 (base), Professional, Enterprise (32/64-bit), Windows 8.1 (32/64-bit) base, Professional or Enterprise version
Windows Installer	2.0 or higher
.Net Framework	2.0 or higher

DEVICE MANAGER NX USB AGENT – SUPPORTED DEVICES VIA USB

Ricoh Device	Ricoh devices that have Ricoh PJI command or Primax PJI command
Other Vendors	Non-Ricoh devices that do not have Ricoh Device PJI command and Primax PJI command

PC SYSTEM REQUIREMENTS FOR PRINTER DRIVER PACKAGER NX

CPU	Minimum: Pentium 4.1 4GHz or higher (1 core 2 thread) Recommended: Core 2 Duo 1.6GHz or higher
Memory	Minimum: 512 MB or more Recommended: 1.0 GB or higher
HDD	350 MB or more (for installation), 1 GB or more (for creating an installer package)
Supported OS	Windows Vista Home Premium/Business/Enterprise/Ultimate SP2 or later (32-bit), Windows 7 Home Premium/Professional/Enterprise/Ultimate SP1 or later (32/64-bit), Windows 8 Professional/Enterprise (32/64-bit), Windows Server 2003 Standard/Enterprise SP2 or later (32-bit), Windows Server 2003 R2 Standard/Enterprise SP2 or later (32-bit), Windows Server 2008 Standard/Enterprise SP1 or later (32/64-bit), Windows Server 2008 R2 Standard/Enterprise SP1 or later (64-bit), Windows Server 2012 Foundation/Essentials/Standard (64-bit)

Languages	English, French, German, Italian, Spanish, Dutch, Simplified Chinese
Remarks	Microsoft .NET Framework 2.0 is required. The installer will install the required .NET Framework on the selected PC.

PC SYSTEM REQUIREMENTS FOR EXECUTING THE CREATED INSTALLER PACKAGE FOR PRINTER DRIVER PACKAGER NX

Supported OS	Windows Vista Home Premium/Business/Enterprise/Ultimate SP2 or later (32/64-bit), Windows 7 Home Premium/Professional/Enterprise/Ultimate SP1 or later (32/64-bit), Windows 8 Professional/Enterprise (32/64-bit), Windows Server 2003 Standard/Enterprise SP2 or later (32-bit), Windows Server 2003 R2 Standard/Enterprise SP2 or later (32-bit), Windows Server 2008 Standard/Enterprise SP1 or later (32/64-bit), Windows Server 2008 R2 Standard/Enterprise SP1 or later (64-bit), Windows Server 2012 Foundation/Essentials/Standard (64-bit)
--------------	---

RICOH @REMOTE CONNECTOR NX

CPU	Minimum (500 devices): 1Core 2thread 2.0GHz/Core 2thread 1.2GHz Recommended (5,000 devices): 1Core 2thread 3.8GHz/Core 2thread 1.6GHz
Memory	Minimum (500 devices): 1.0 GB, Recommended (5,000 devices): 2.0 GB
HDD	Minimum (500 devices): 10 GB, Recommended (5,000 devices): 30 GB
Operating System	Server: Windows Server 2008/Server 2008 R2 ST/EP SP1 (32/64-bit), Windows Server 8 Client: Windows 7 Home Premium/Professional/ Enterprise/Ultimate SP1 (32/64-bit), Windows Server 2003/Server 2003 R2 ST/EP (32-bit)*, Windows Server 2008 ST/EP SP1 (32/64-bit), Windows Server 2008 R2 ST/EP (64-bit), Windows Server 8 *Depending upon Microsoft support status.

VMWare	VMWare ESX 4, VMWare ESXi 4.1/5, Windows Server 2008 Hyper-V 2.0, Windows Server 2012 Hyper-V
Browser	Microsoft® Internet Explorer 7.0 or later, Mozilla Firefox 5.0 or later, Google Chrome
Database**	Microsoft® SQL Server® 2008 (Workgroup, Standard, Enterprise) Microsoft® SQL Server® 2008 R2 (Workgroup, Standard, Enterprise) Microsoft® SQL Server® 2012 (Business Intelligence Edition, Standard, Enterprise) Oracle 11g R2 at 11.2.0.4 or greater (Standard, Standard One, Enterprise) Oracle 12c (Standard, Standard One, Enterprise) **Database can be shared with the DeviceManagement System.
Language Support	English (US), French, German, Italian, Spanish, Dutch, Japanese, Chinese (simplified)

RICOH
imagine. change.

www.ricoh-usa.com

Ricoh Americas Corporation, 70 Valley Stream Parkway, Malvern, PA 19355 1-800-63-RICOH
©2014 Ricoh Americas Corporation. All rights reserved. Ricoh® and the Ricoh logo are registered trademarks of Ricoh Company, Ltd. All other trademarks are the property of their respective owners.
The content of this document, and the appearance, features and specifications of Ricoh products and services are subject to change from time to time without notice. Products are shown with optional features. While care has been taken to ensure the accuracy of this information, Ricoh makes no representation or warranties about the accuracy, completeness or adequacy of the information contained herein, and shall not be liable for any errors or omissions in these materials. Actual results will vary depending upon use of the products and services, and the conditions and factors affecting performance. The only warranties for Ricoh products and services are as set forth in the express warranty statements accompanying them.